

Step 6

There is a locking latch on the bottom wall mount only.

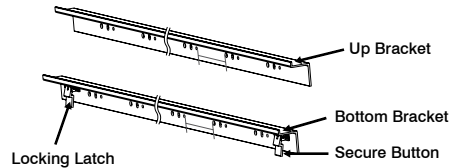


Fig 16

Step 7

Fix the mounts onto the wall separately. (Fig 17-18)
(For 100" - height (h) = 1356mm & 115" - height (h) = 1542mm).

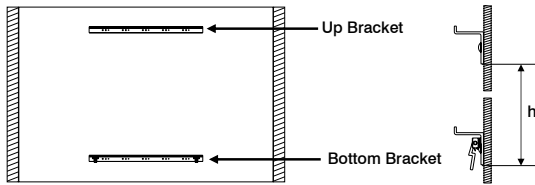


Fig 17

Fig 18

Step 8

Hook screen onto the top mount and bottom mount. (Fig 19-20)

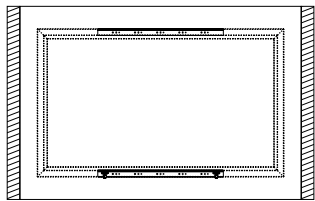


Fig 19

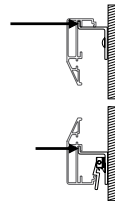


Fig 20

Step 9

To uninstall the screen, please press the latch towards the wall to release bottom frame from bottom mount, then lift the screen a little to release it totally from top and bottom groove of the mounts. (Fig 21-22)

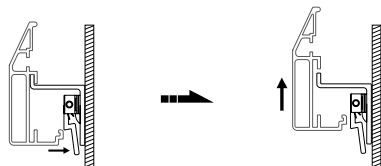


Fig 21

Fig 22

Happy Viewing!

gv

GRANDVIEW®

Protecting Your Screen:

- Keep away from direct sunlight or high temperatures.
- Examine both the front and back surfaces before retracting into the case to make sure it is free of dust, dirt, insects or other foreign matter.
- Use a soft brush or cloth to lightly remove any foreign particles.

Cleaning Your Screen:

- Do not use any solvents, chemicals or abrasive cleaners on the screen surface.
- Use a mild detergent with warm water to remove any marks on the surface or screen case.
- Always immediately dab the screen with a lint free soft cloth to avoid soap marks.
- Do not scrub the surface.

Warranty: 12 Months

Imported and Distributed in Australia by
Herma Technologies
Factory 4A, 6 Albert St
Preston, VIC 3072

For more information please go to
www.grandviewscreens.com.au
or call 1300 730 025

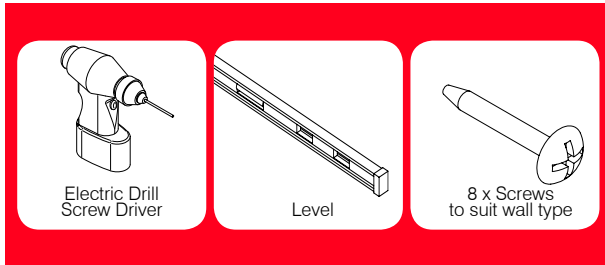
gv

GRANDVIEW®

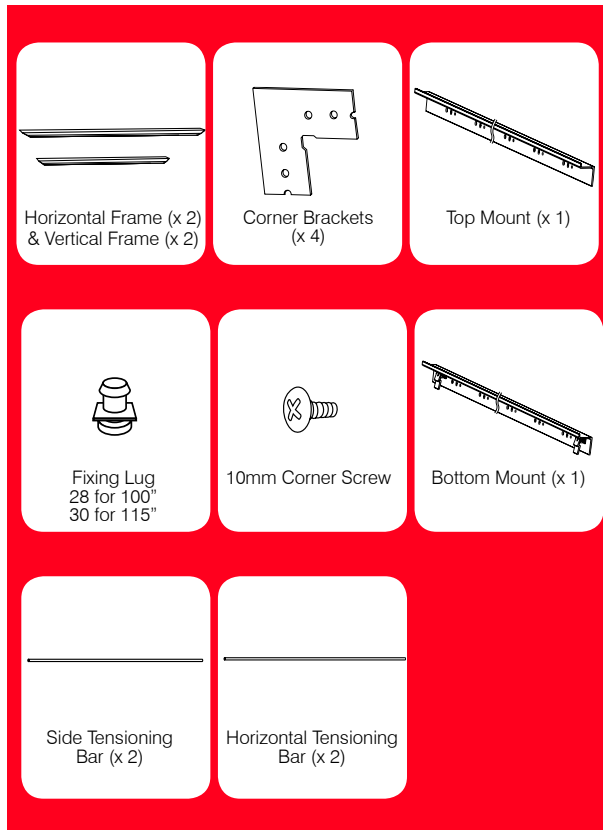


Grandview Flocked Frame
Screen User Manual

Required (not supplied)



Supplied parts



Step 1

Lay each section of the frames on a tidy flat surface. (Fig 1)

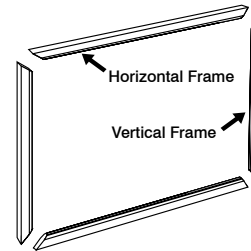


Fig 1

Step 2

Slide Fixing Lugs into grooves on the reverse side of frames. (Fig 2 - 3)

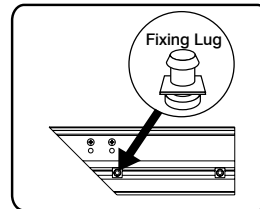


Fig 2

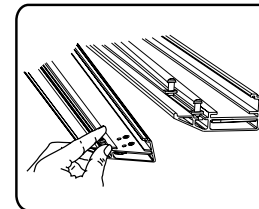


Fig 3

Step 3

Insert both horizontal and vertical frame sections with the corner stakes. Ensure all joints are square and then lock off by tightening with the screws provided. (Fig 4-7)

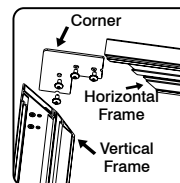


Fig 4

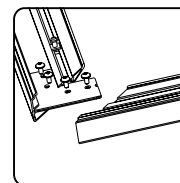


Fig 5

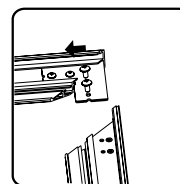


Fig 6

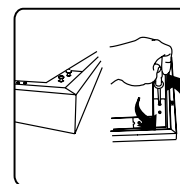


Fig 7

Step 4

Unfold screen fabric and insert the tensioning bars into the fabric grooves. (Fig 8-10)

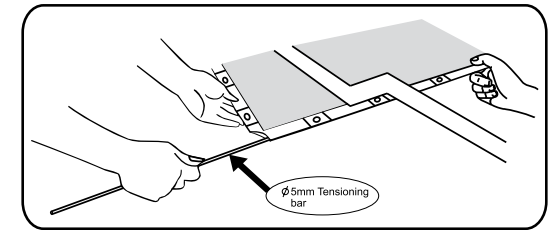


Fig 8

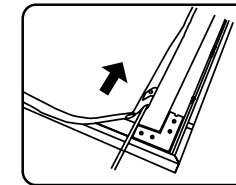


Fig 9

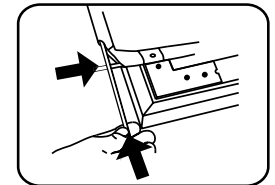


Fig 10

Step 5

Align fixing lugs and the eyelets provided on the fabric. Using the tensioning bar, pull fabric eyelets over the lugs. (Tip: Arrange horizontal tensioning bars first then side tensioning bars). (Fig 11-15)

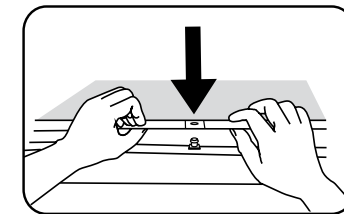


Fig 11

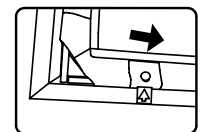


Fig 13

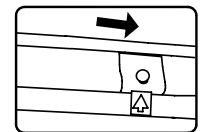


Fig 14

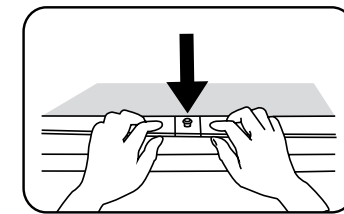


Fig 12

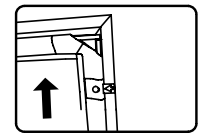


Fig 15